


How Billing Works



You'll receive two bills:
One from Pepco, and one from CleanChoice Energy*



Sample

An Exelon Company

Your Electric Bill - Jan 2019
for the period December 3, 2018 January 6, 2019

Summary of your charges


New electric distribution charges - Pepco	\$100.00
	-\$88.00
Total amount due	\$12.00

Details of your Electric Charges (pg.2)

Type of charge	How we calculate this charge	Amount (\$)
CNM Credit: CREFA	543- kWh X \$0.0809700 per kWh	-48.00
CNM Credit: CREFB	494- kWh X \$0.0809700 per kWh	-40.00

Your solar credits will reduce the total amount you owe the utility

Your monthly bill credit is your bill credit rate multiplied by the solar energy (kWh) produced by your share of the farm



Sample

Your Community Solar Monthly Invoice
Invoice Date: 02/07/2019

Your Account Summary

Current Charges (Subscription Price x kWh Produced)	\$84.00
Adjustments	\$0.00
Balance Transfer	\$0.00
Late Fee	\$0.00
Early Termination Fee	\$0.00
Total Amount Due	\$84.00

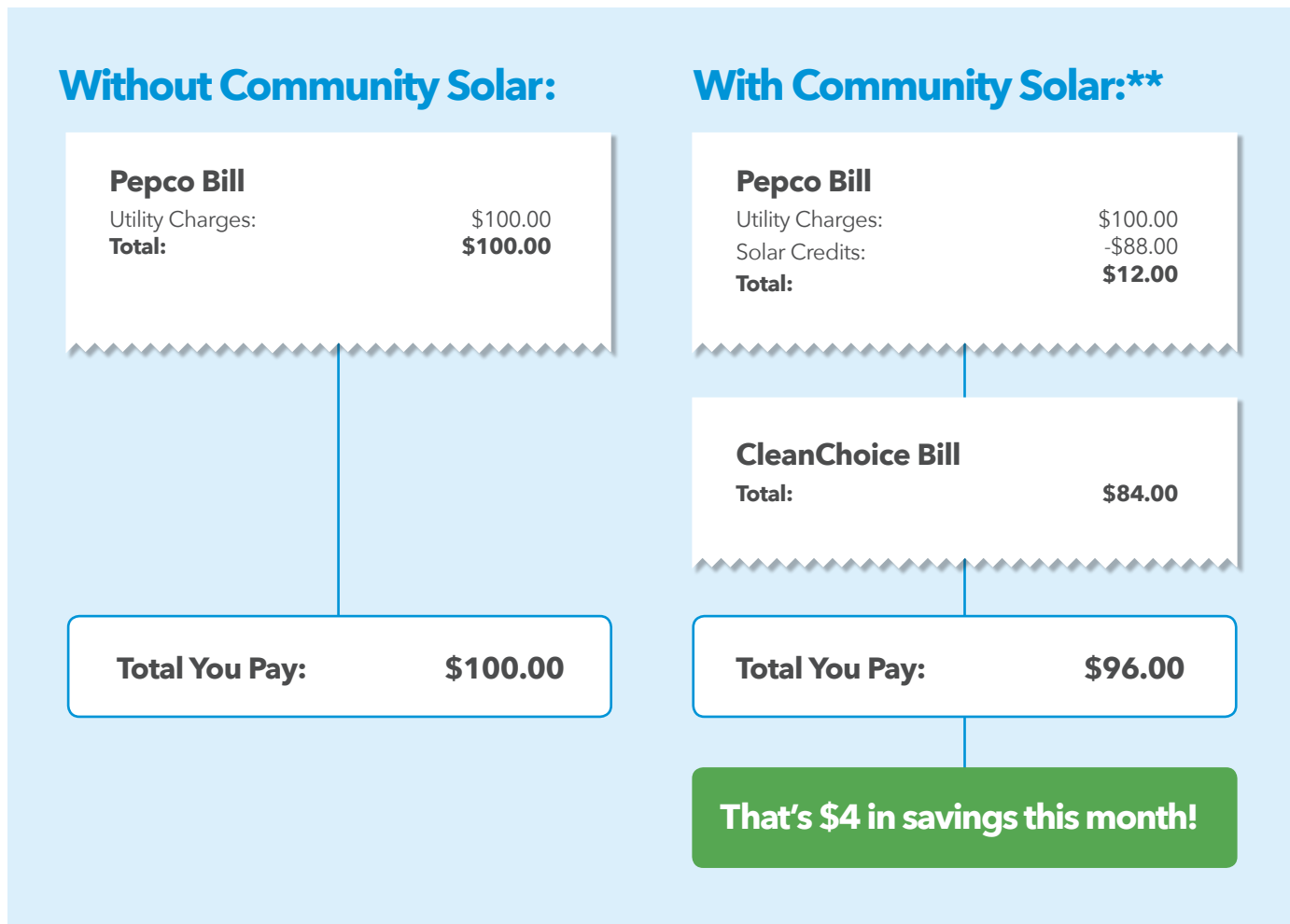
You'll receive your CleanChoice bill about a month after your solar credits are reflected on your utility bill

You pay 5% less than the value of the credits you received

***IMPORTANT:** Community Solar offers up to three years of bill credits for your subscription to a community renewable energy facility ("CREF"). The bill credit rate is not guaranteed and may increase or decrease over the term of the agreement based on your utility's tariffs. The subscription rate is not regulated by the District of Columbia Public Service Commission. Savings are not guaranteed. Your purchase of bill credits helps support community solar in the District of Columbia but you do not own the environmental attributes. Terms and conditions apply and are subject to change. Review the Subscription Agreement for additional details.

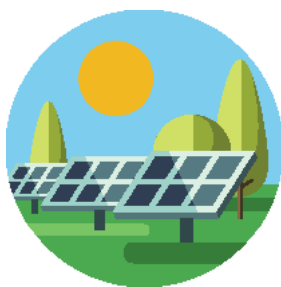
Sample Billing Breakdown

Save money while supporting 100% clean energy.



Savings by the Season

Your monthly savings will vary based on seasonal production and your consumption.



Summer

You may notice your Community Solar bill and bill credits are higher during months when the farm produces more solar energy. If your solar farm subscription produces more credits than you can use in a single billing cycle, these credits can roll over and apply to future utility bills.



Winter

During months with shorter days, you may notice fewer bill credits applied to your utility bill. Previously earned credits may be applied towards your current balance. Your Community Solar bill and bill credits are lower when the farm does not produce as much solar energy.

Additional questions? Reach CleanChoice Energy at **1-800-249-5080** or support@cleanchoiceenergy.com

*NOTE - CleanChoice Energy is not affiliated with your utility. Sample bills are intended to explain how billing works for community solar and not to represent actual monthly charges, credits, or savings. Review the Subscription Agreement for additional details on bill credit value and pricing.